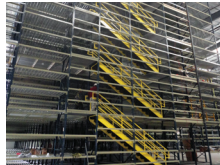




Rack Risk Report



Safety Assessments



You may have hazardous conditions in your records center. Learn how to identify them and prevent costly employee injury.

▶ If damage is found, contact a professional to evaluate your records center, determine any hazards, and correctly address them.

▶ The examples presented here are just a few of the issues that a life safety and remediation specialist could detect and report to facility managers to begin the process of remediation.

Frames



Damage to frames is common in a records center. Damage that should be addressed immediately includes:



- ▶ Rips, tears, missing or broken welds
- ▶ Column deformation greater than ½"
- ▶ Strut deformation greater than 1"
- ▶ Corner deformation in columns
- ▶ Damage behind beam connections

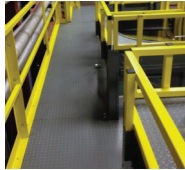


Rack Repair is a viable option to replacing damaged uprights. It can reduce down-time to facility operations and is often more economically feasible compared to total frame replacement.

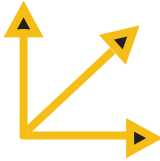
Fall Protection



Fall protection should be installed at edges of catwalks and mezzanines to help guide employees and equipment.

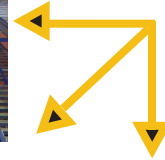


Handrail should be installed along open aisles, at the end of aisles that have drop-offs, and along stairways.



Kick plates should be installed at row ends.

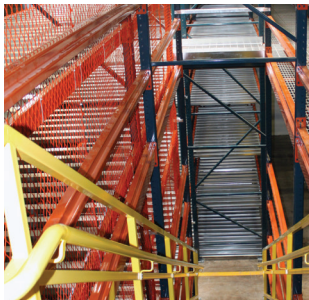
Even a slight gap between the rack or wall and the edge of flooring is a safety risk.



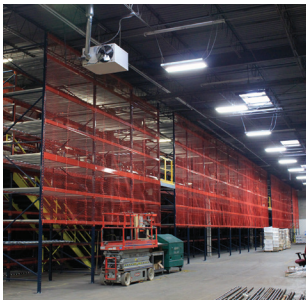
Safety Netting



- ▶ Safety netting should be installed in areas where employees will be present and materials may fall from the rack.



Netting should be installed along stairways



Netting should be installed over staging areas



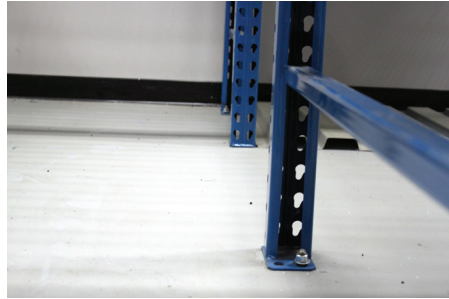
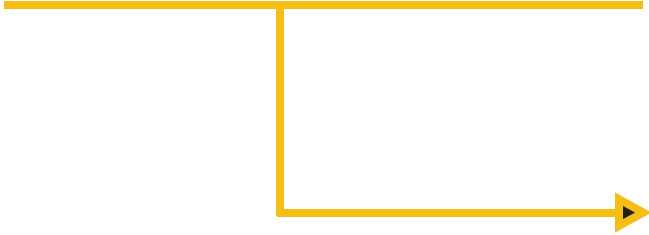
Additionally, all hardware securing safety netting should be attached so that the netting is taught.



Anchors



Missing or loose anchors create an unstable racking system that can lead to a collapse. These should be checked periodically, especially in areas where damaged frames are found.



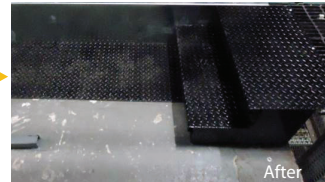
Main & Service Aisles



Flooring should be flush and professionally installed so to not pose a tripping hazard to employees or risk affecting equipment.



Uneven aisles are dangerous for employees traveling through the records center.



Column Protection



Column protection is a practical way to avoid damage to uprights and should be installed at all row ends and all areas susceptible to impact.



There are various types of column protectors, a life safety and remediation professional can help decide which is best for your distribution center.

Load Capacities



▶ Capacity overload situations are not always obvious and should therefore be closely monitored.

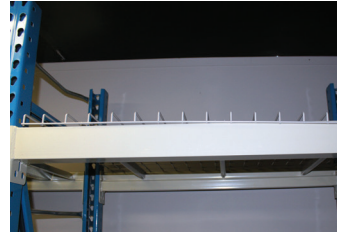
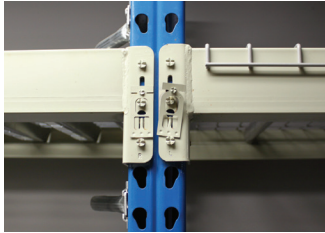
▶ To help avoid this, ensure that weight capacities are displayed for employees on all applicable items such as beams, shelves and mezzanines.



Safety Components



Dislodgement of components such as safety locks, cross bars and wire decks can affect properly storing materials on rack.





REB offers life safety and remediation assessments in which our specialists will evaluate your racking, give you a detailed list of safety risks, and offer remediation solutions to properly address damage. We've provided companies with these services for over 50 years and would be happy to assist you. Contact us for more information.



Integrating Storage and Safety Solutions in the Global Economy

Phone: 773-252-0400

Email: info@rebstorage.com

www.rebstorage.com