

MEZZANINES

REB Storage Systems International

Mezzanines are a cost effective solution to add additional capacity to a warehouse or distribution center by utilizing vertical space. They are typically more affordable than building renovations and can adjust as your operations grow.

Mezzanines can be designed to meet specific framing options, safety codes, access point requirements, flooring types, and product loading and unloading operations. Additionally, a mezzanine design takes into account all possible load requirements including dead loads (anything permanent on the mezzanine) and live loads (pallet jacks, people standing and walking, etc.).

Read below to learn more about the different mezzanine options and components.

Types of Warehouse Mezzanines

Free Standing Mezzanines

Also known as a structural mezzanine, free standing mezzanine allows for maximum use of floor and mezzanine level space. It provides easy assembly and disassembly and the wide-span design allows traffic flow under platform. It is ideal for parts and product storage as well as conveyor support.

Rack Supported Mezzanine

This style provides additional storage areas above or between pallet racks. Also known as catwalks. Allows for multiple loading and unloading locations of pallets simultaneously within racking systems.

Shelving Supported Mezzanine

This is an ideal option for expanding storage of smaller items above shelving. The shelving serves as a base for the mezzanine. It is an economical way to expand existing space, but least flexible for reconfiguration.

IN THIS ARTICLE:

TYPES OF WAREHOUSE MEZZANINES

MEZZANINE COMPONENTS

PROFESSIONAL DESIGN AND INSTALLATION

YOUR NEXT STEPS FOR A MEZZANINE SYSTEM

Mezzanine Components

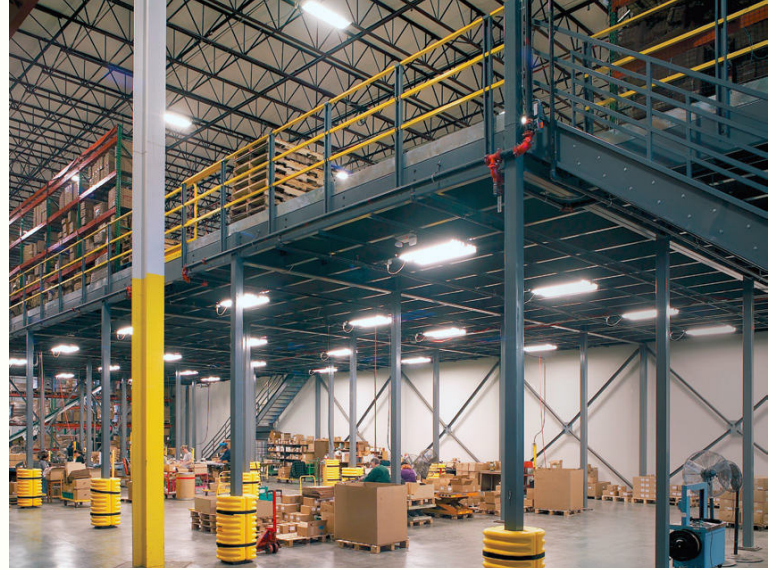
REB will incorporate proper components to optimize mezzanine operations and safety.

- **Flooring:** Choose from resin board, corrugated decking, bar grating, open steel planking, and concrete.
- **Staircases:** Numerous models and options available including number of rails, angles, risers, tread, and step width.
- **Ladders:** Ladders are designed for safe travel throughout the mezzanine.
- **Handrails:** Handrails are designed to keep employees safe.
- **Gates:** We can incorporate gates into your mezzanine to expedite proper material handling. Options include single swing gate, double swing gate, sliding gate, lift-out safety gate, and safety pivot gate.
- **Conveyors:** To help product move efficiently to and from the mezzanine level.
- **Modular Office:** Integrating a self-standing mezzanine with a modular office and fixed windows can create additional production space on the ground floor while overseeing the warehouse operations from above.



Professional Design and Installation

REB Storage Systems International has more than 50 years of experience designing and installing mezzanine systems in warehouses and distribution centers. Our vast experience makes us able to assess the needs of any space and determine which type of mezzanine is ideal to provide you with a mezzanine that is the right solution for your needs.



Your Next Steps for a Mezzanine System

Whether your next step is to gather more information or request a quote, consider REB Storage Systems. REB is a highly experienced systems integrator, in business since 1962. REB has 17 in-house project managers and engineers, all highly experienced in the material handling industry. These people know this industry inside and out.

REB is highly knowledgeable and experienced in designing, engineering, and installing mezzanine systems and will make sure your system is the best fit for your space. We work with you to provide a turnkey system. From engineering, design, products procurement, subcontractor management, install, and permitting support, REB handles it all for you.

We'd appreciate the opportunity to help you further, whether that be more information or a quote. Email or call us to get in touch with a REB representative.

CONTACT US:



Email: info@rebstorage.com

Fax: (773) 252-0303

Phone: (773) 252-0400

Toll Free: (800) 252-5955